

Dorset Pavilion office in the garden October 2003

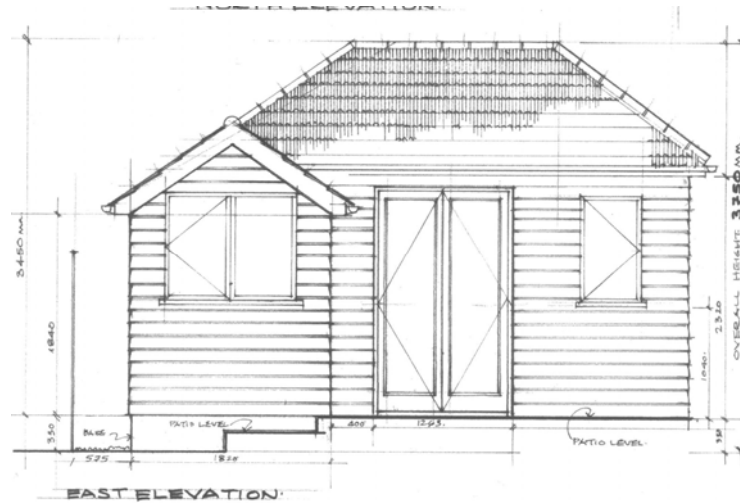
Space Design France – Tele: +44 [0]20 7252 0808, www.spacedesignfrance.co.uk

Case Study

The clients challenge was to provide a compact well equipped modern office within a low profile building to be harmonious with the rural surroundings and the Victorian garden.

The solution was timber framed structure insulated to current building regulation standards, with dry lined interior walls, clad externally with treated shiplap boarding stained to soften the profile.

The conventionally hipped structure roof was covered with double Roman tiles procured from a specialist reclamation yard. The interior layout was planned to allow flexibility of use to cater for the clients future needs, i.e. the reversion to a summer house.



Proposed Rear Elevation

