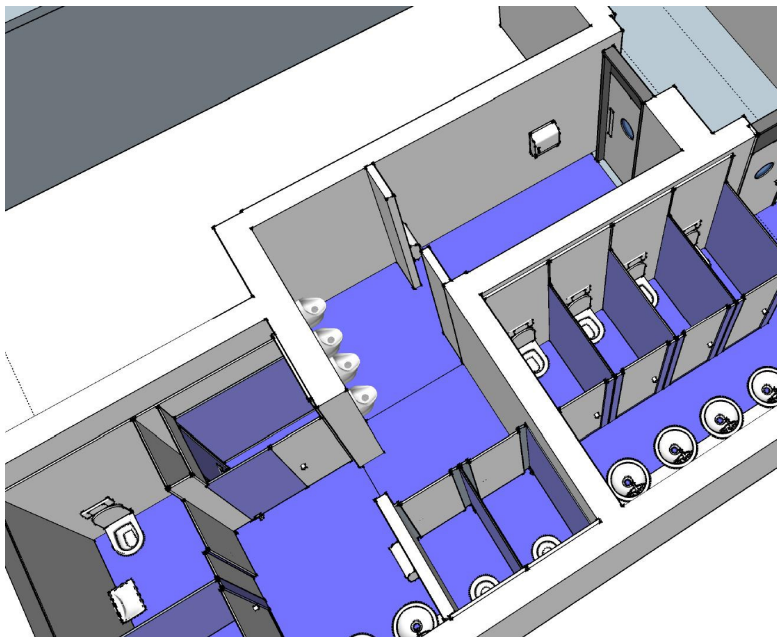
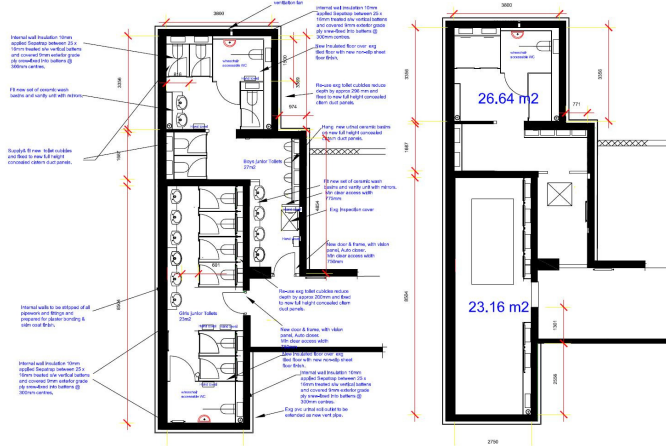




REFURBISHMENT OF JUNIOR TOILETS - Option 2 - REFURBISHMENT OF JUNIOR TOILETS Reflected Ceiling Plan



Case study – Primary School

Junior Toilets Refurbishment

Brief – Complete strip-out and upgrade of external boys and girl’s toilet block. Provision of disabled and ambulant toilet cubicles

Scheme Design – The new layout had to provide increased capacity ratio of boys and girls toilet facilities with concealed services and welcoming colour ways to differentiate the genders.

Due to financial and site restrictions full external insulation was not possible. Therefore new interior applied insulation material was researched and introduced to mitigate the heat loss from the solid 9” brick walls and concrete floors and ceiling.

Scope of work – Produce photographic and site survey, to prepare scheme layouts and outline specifications, spread sheet costs and Sketch 3D visuals.

Arrange initial meetings with borough surveyor, head teacher and site manager, to discuss options for layout, fittings, materials selection, including a review of maintenance and health and safety issues.

M : +44 [0]7710 402 457

Email: john@spacedesigneurope.co.uk

www.spacedesigneurope.co.uk